

UNDERSTANDING ILLNESSES

Designed to be used in conjunction with educational videos downloadable at www.sidewalkspecials.org/education

1

What should you do as soon as you see your dog has ticks or fleas or is losing hair?



TAKE IT TO THE VET CLINIC STRAIGHT AWAY.



WAIT FOR A WEEK OR TWO TO SEE IF IT GETS BETTER.



TIE A BALLOON TO ITS NECK TO SCARE PARASITES AWAY.

2

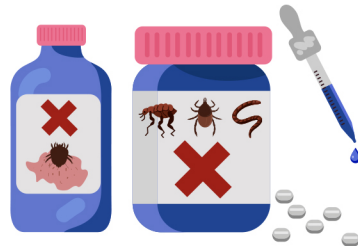
True or false?



PUTTING ALOE VERA IN YOUR DOG'S DRINKING WATER WILL KILL PARASITES AND GIVE IT A BEAUTIFUL COAT.

TRUE

FALSE



YOU NEED THE CORRECT MEDICINE FROM THE VET CLINIC TO KILL PARASITES AND CURE HAIR LOSS.

TRUE

FALSE



RUBBING CAR OIL INTO YOUR DOG'S COAT WILL HEAL ALL SKIN PROBLEMS.

TRUE

FALSE

3

Circle the correct signs of Tick Bite Fever.



YOU WILL FIND TICKS ON YOUR DOGS COAT AND IN THEIR EARS.



YOUR DOG WILL NOT WANT TO EAT AND BECOME LETHARGIC.



YOUR DOG'S WEE WILL TURN GREEN IN COLOUR.

4

How do you make sure your dog stays worm-free?



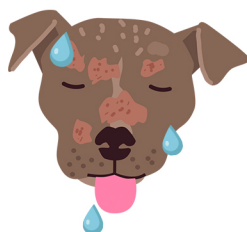
TIE A FRESH LEAF TO YOUR DOG'S TAIL TO LURE OUT ANY WORMS.

DEWORM YOUR DOG REGULARLY WITH TABLETS FROM YOUR VET.

CLEAN YOUR DOG'S LIVING SPACE EVERY DAY.

5

Circle the correct reason Mange causes dogs to lose hair.
Then connect it to the correct treatment.



MANGE IS A TINY PARASITE THAT LIVES ON AND FEEDS OFF THE SKIN.

MANGE IS WHEN A DOG SCRATCHES OFF ITS OWN FUR TO COOL DOWN.

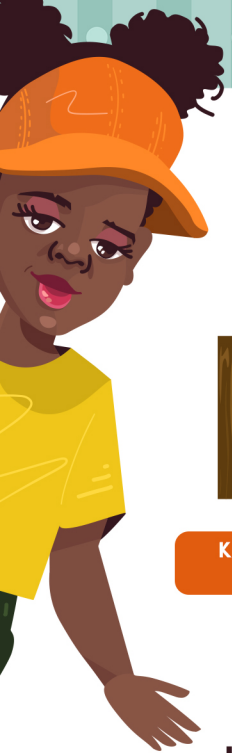
MANGE IS WHEN A DOG'S FUR FALLS OUT DUE TO ALLERGIES.

CLEAN YOUR DOG'S KENNEL THOROUGHLY.

GET THE CORRECT TABLETS, DROPS OR SHAMPOO FROM YOUR VET CLINIC.

APPLY CAR OIL TO PROTECT AND SOOTHE THE SKIN.





6

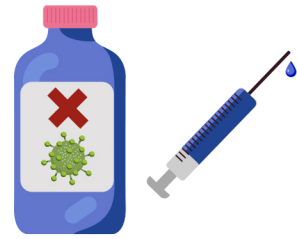
Circle the best way to protect your dog from diseases.



KEEP YOUR DOG CHAINED
UP AT HOME.



WASH YOUR DOG EVERY DAY
WITH SOAP.



MAKE SURE YOU STAY UP TO
DATE WITH ITS INOCULATIONS.

7

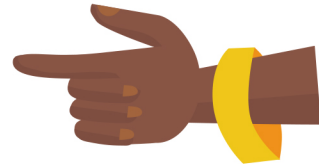
How do you keep track of when your dog is due for its inoculations?



MAKE SURE TO KEEP AND UPDATE
YOUR DOG'S VET CARD.



MARK IT ON YOUR CALENDAR
SO YOU DON'T FORGET.



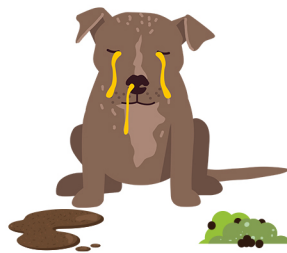
DO BOTH.

8

Connect the symptoms to the correct diseases below.



LETHARGY
LOSS OF APPETITE
BLOOD IN STOOL
VOMITING

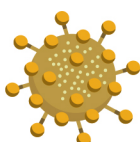


COUGHING
SEIZURES
MUCUS
VOMITING
DIARRHOEA

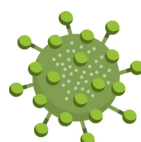


PARALYSIS
DROOLING
VISIBLE WOUND

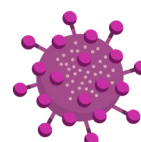
DISTEMPER



PARVOVIRUS

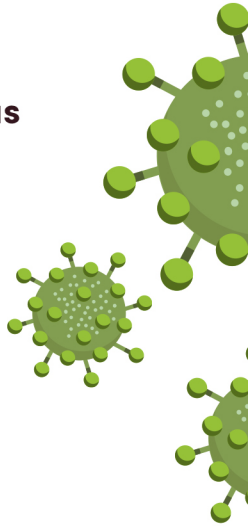


RABIES



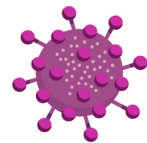
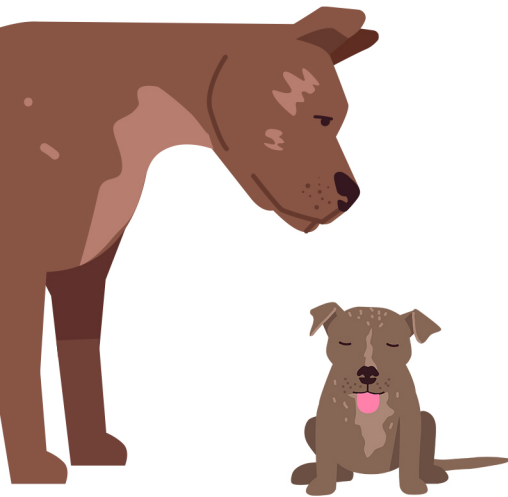
9

Once your dog has contracted Parvovirus, how long does the virus live and must your yard stay dog-free for?



10

True or false?



IT'S SAFE FOR OTHER DOGS TO VISIT YOUR DOG WHILE IT'S SICK.

IF YOUR DOG LOOKS SICK, TELL A RESPONSIBLE ADULT STRAIGHT AWAY.

RABIES IS DANGEROUS FOR HUMANS AS WELL AS DOGS.

TRUE

FALSE

TRUE

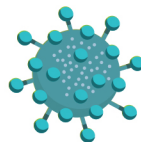
FALSE

TRUE

FALSE

11

Connect the TVT (Transmissible Venereal Tumour) to the correct definition.



TVT

IS A TYPE OF INFECTION.

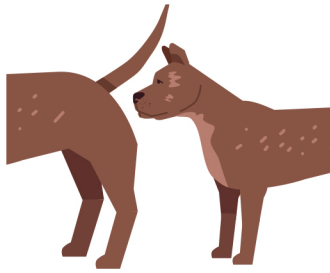
IS A TYPE OF CANCER.

IS A TYPE OF FLU.



12

How do TVTs spread amongst dogs?



TVTs ARE CONTRACTED BY DOGS SNIFFING EACH OTHER'S BUMS.



TVTs HIDE IN LONG GRASS AND JUMP ON DOGS PASSING BY.



TVTs ARE CONTRACTED BY DOGS THROUGH MATING.

13

Explain how TVTs can be prevented and cured.



PREVENTION



CURE

14

True or false?



SECURE YOUR DOG AWAY FROM OTHER DOGS WHILE THEY RECEIVE TREATMENT.

TRUE

FALSE



IT IS ONLY NECESSARY TO STERILISE GIRL-DOGS AGAINST TVTs.

TRUE

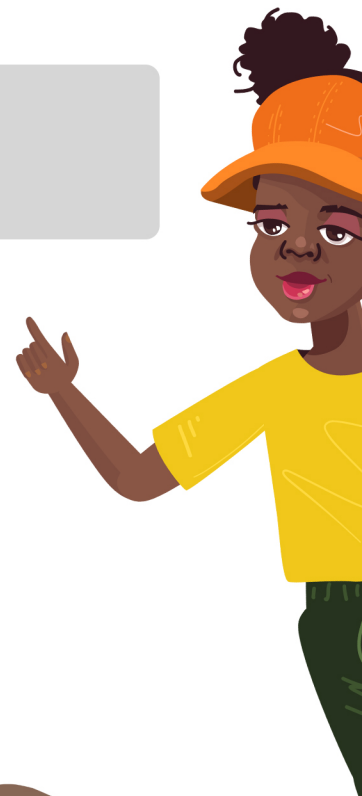
FALSE



TVTs WILL GROW IF NOT TREATED AND CAN KILL YOUR DOG.

TRUE

FALSE



15

Name the things you must do if you think your dog is sick, but you can't take it to the vet clinic straight away.

a

b

c



16

True or false?



INOCULATIONS AND STERILISATION WILL PROTECT YOUR DOG FROM DISEASE.

TRUE

FALSE

WELL DONE!

How many did you answer correctly?



A SIDEWALK SPECIALS project

with special thanks to WILD AT HEART and FRANCE-HAYHURST FOUNDATION

For more educational materials visit www.sidewalkspecials.org/education

