

UKUQONDA IIMIKHUHLANE

Yenzelwe ukusetyenziswa nama vidiyo ayimfundiso anokudawunlowdwa lapha ku www.sidewalkspecials.org/education

1

Kumele wenzeni mawubona ukuthiinja yakho inama ticks nama fleas noma ilahlekelwa buboya bayo?



YISE KWILKINIKHI YEZILWANE KAMSINYA.



YIMA ISONTO ELILODWA NOMA AMABILI UBONE UKUTHI IBA NGCONO NOMA CHA.



BOPHA IBALLOON LANA EMQALENI WAYO UKUZE UYIVIKELE KUMA PARASITES.

2

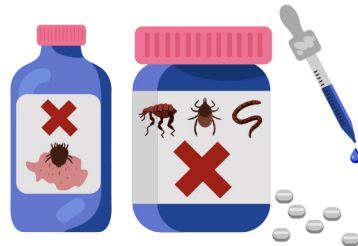
Yiqiniso noma ngamanga?



UKUTHELA IALOE VERA EMANZINI OKUSELA ENJA YAKHO KUZOBULALA AMA PARASITES KUZE KWENZE NOBOYA BENJA YAKHO BUBE BUHLE.

YIQINISO

NGAMANGA



UDINGA IMITHI ELUNGELE UKUBULALA AMAPARASITES ETHOLAKALA KWILKINIKHI YEZILWANE.

YIQINISO

NGAMANGA



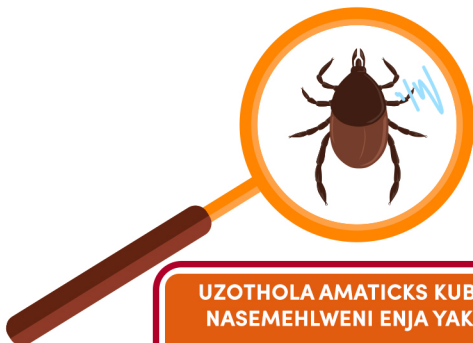
UMA UGCOBA INJA YAKHO NGE OLI YEMOTO KUZOPHILISA ZONKE IZINKINGA ZESIKHUMBA SENJA YAKHO.

YIQINISO

NGAMANGA

3

Kokelezela zonke izimpawu zomkhuhlane wokulunywa ngama tick.



UZOTHOLA AMATICKS KUBOYA NASEMEHLWENI ENJA YAKHO.



INJA YAKHO ANGEKE IFUNE UKUDLA KWAYE IZOBA NE LETHARGIC.



INJA YAKHO IZOBA NOMCHAMO ONOMBALA OLUHLAZA

4

Usenza kanjani isiqinisekiso sokuthiinja yakho
ihlala ingenazo I zintshulube?



BOPHA ISIHLELA ESISHA
EMSILENI WENJA YAKHO
UKUXOSHA IZINTSHULUBE.

SUSA IZIKELEMU ENJENI
YAKHO NGEZINKATHI ZONKE
NGAMAPHILISI ATHOLAKALA
EKLINIKHI YEZILWANE

HLANZA INDAWO EHLALA
INJA YAKHO MIHLA YONKE.

5

Kokelezela isizathu esiqondile esenza ukuthi i mange yenze izinja
zilahlekelwe izinwele. Bese uyixhuma ekwelashweni okufanele.



I 'MANGE' YIPARASITE ENCANE
EHLALA NEPHILA NGOKUDLA
ESIKHUMBENI.



I 'MANGE' KUMA INJA IZINWAYA
UBOYA BAYO UKUZIPHOLISA.



I 'MANGE' KUMA UBOYA
BENJA BUWA PHANTSI
NGENXA YAMA ALLERGIES.

HLANZA INDLU YENJA
YAKHO KAHLE.



THOLA IMITHI EKUYIYO, AMACONTSI
NOMA ISHAMPOO KWIKLINIKHI YEZILWANE.



GCOBA IOIL YEMOTO
UKUPHOLISA ISIKHUMBA.



6

Khetha indlela ebalulekile yokuvikelainja yakho kwimikhuhlane.



BOPHELELA INJA YAKHO
EKHAYA.



GEZA INJA YAKHO NGENTSIPHO
MIHLA YONKE.



YENZA ISIQINISEKISO SOKUTHI
UHLALA USESIKATHINI NEMIGOMO.

7

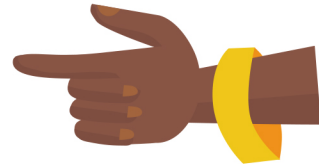
Uyilandelega kanjani indaba yokuthiinja yakho ihlala isesikhathini nemigomo yayo?



YENZA ISIQINISEKISO SOKUTHI
IKHADI LENJA YAKHO LIHLALA



YIPHAWULE KWIKHALENDAYAKHO UKUZE UNGAYIKHOHLWA.



YENZA KOKUBILI.

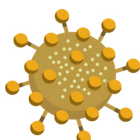
8

Xhomanisa izimpawu ekuyizo kule mikhuhlane elandelayo.



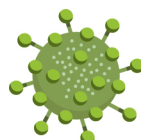
ILETHARGIC
UKUPHELELWA NGUMDLA WOKUDLA
IGAZI KWILINDLE
UKUHLANZA

iDISTEMPER



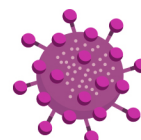
UKUKHOHLELA
UXHUZULO
IMIFINYA
UKUHLANZA
URHUDO

iPARVOVIRUS



UKUKHUBAZEKA
UKUVUZA IZINKCWE
ISILONDA

iRABIES



9

Umainja yakho iseyithole iParvovirus, lo mkhuhlane uhlala isikhathi eside kangakanani noma kumele ijaridi yakho ihlale ingenanja isikhathi esingakanani?



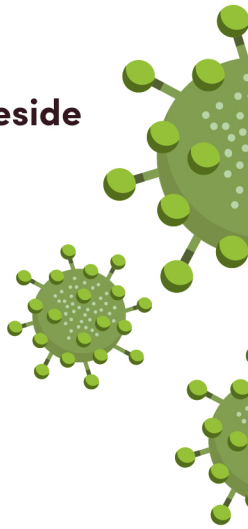
Izinyanga ezimbili



Izintsuku ezintathu

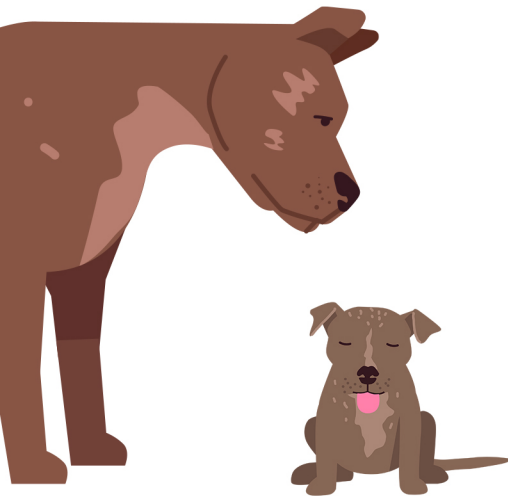


Izinyanga eziyisithupha



10

Yiqiniso noma ngamanga?



KUVIKELEKILE UKUTHI EZINYE ZIVAKASHELE INJA YAKHO NGESIKHATHI ISAPHETHWE NGUMKHUHLANE.

YIQINISO

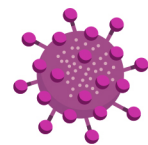
NGAMANGA



UMA INJA YAKHO IGULA SHESHISA UTSHELE UMUNTU OMDALA ONENKATHALO.

YIQINISO

NGAMANGA



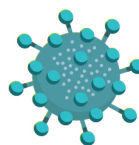
IIRABIES ZIYINGOZI EBANTWINI NASEZINJENI.

YIQINISO

NGAMANGA

11

Hlanganisa iTVT (Transmissible Venereal Tumour) nengcaciso ekuyiyona.



iTVT

YINTLOBO ETHIZE YOMKHUHLANE.

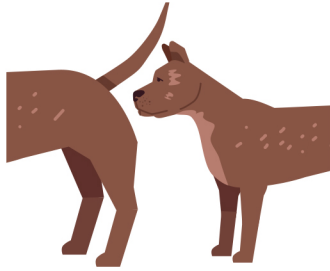
IWUHLLOBO LOMDLAVUZA.

YINTLOBO ETHIZE YOMKHUHLANE.



12

iTVT isulela kanjani ezinjani?

iTVT ISULELA UMA INJA
INUKISA ENYE EZIMPUNDU.iTVT IZIFIHLA KUNTSHANI OLUDE OLUSE IBE
SEYIXHUMELA IZINJA EZIDLULA NGENDLELA.IZINJA ZIFUMANA iTVT
NGOKULALANA.

13

Cacisa ukuthi iTVT ingavikekwa ize ilaphwe kanjani.

Ukuvala inzalo yenja yakho
kuzoyenza ingalali nezinye
izinja ibe seyiba sengozi
yokuthola iTVT.

UKUVIKELA

Inja ethole iTVT kumele ithole
ichemotherapy kwiklinikhi yezilwane
ukulapha umdlavuza.

UKWELAPHA

14

Yiqiniso noma ngamanga?

VIKELA INJA YAKHO KWEZINYE NGESIKHATHI
ITHOLA UKWELATSHWA.

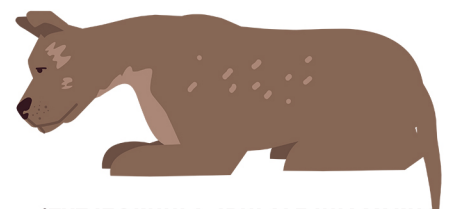
YIQINISO

NGAMANGA

KUNESIDINGO SOKUTHI
KUALWE INZALA YEZINJA
EZINGAMANTOMBAZANE KUPHELA.

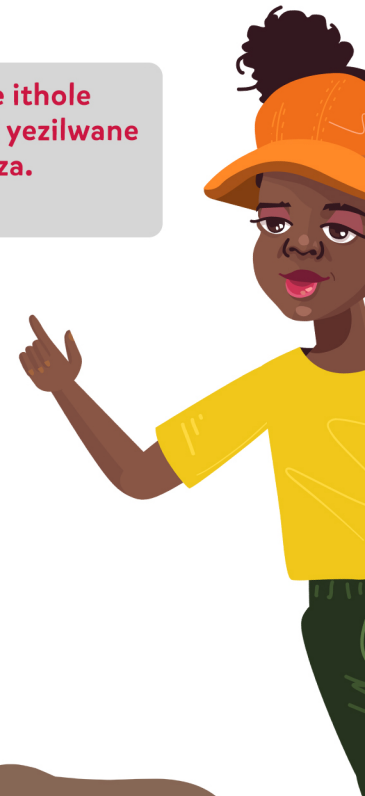
YIQINISO

NGAMANGA

iTVT IZOKHULA IBULALE INJA YAKHO
UMA INGATHOLI UKWELAPHEKA.

YIQINISO

NGAMANGA



15

Chaza izinto ekumele uzenze umainja yakho igula, kodwa ungakhoni ukuyisa kwiklinikhi yezilwane ngokushesha.

a

Yenza isiqinisekiso sokuthi inendawo efudumele yokuphumula.

b

Yenza isiqinisekiso sokuthi inamanzi amaningi.

c

Yenza isiqinisekiso sokuthi isitya sayo sokudla siseduzane.



16

Yiqiniso noma ngamanga?



INOCULATIONS NOKUVALA INZALA KUZOVIKELA INJA YAKHO KWIMIKHUHLANE.

YIQINISO

NGAMANGA

WENZE KAHLE!

Uphendule ezingaki kahle?



Umsebenzi we SIDEWALK SPECIALS

nokubonga kwi WILD AT HEART no France-Hayhurst Foundation

Ukuze uthole ulwazi olungcono vakashela u: www.sidewalkspecials.org/education