

UKUQONDA IIMIKHUHLANE

Yenzelwe ukusetyenziswa nama vidiyo ayimfundiso anokudawunlowdwa lapha ku www.sidewalkspecials.org/education

1

Kumele wenzeni mawubona ukuthiinja yakho inama ticks
nama fleas noma ilahlekelwa buboya bayo?



YISE KWILKINIKHI YEZILWANE
KAMSINYA.



YIMA ISONTO ELILODWA NOMA
AMABILI UBONE UKUTHI IBA
NGCONO NOMA CHA.



BOPHA IBALLOON LANA
EMQALENI WAYO UKUZE
UYIVIKELE KUMA PARASITES.

2

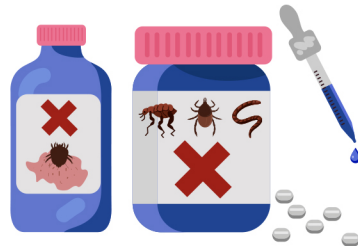
Yiqiniso noma ngamanga?



UKUTHELA IALOE VERA EMANZINI OKUSELA
ENJA YAKHO KUZOBULALA AMA PARASITES
KUZE KWENZE NOBOYA BENJA YAKHO
BUBE BUHLE.

YIQINISO

NGAMANGA



UDINGA IMITHI ELUNGELE
UKUBULALA AMAPARASITES
ETHOLAKALA KWILKINIKHI
YEZILWANE.

YIQINISO

NGAMANGA



UMA UGCOBA INJA YAKHO NGE
OLI YEMOTO KUZOPHILISA ZONKE
IZINKINGA ZESIKHUMBA SENJA YAKHO.

YIQINISO

NGAMANGA

3

Kokelezela zonke izimpawu zomkhuhlane wokulunywa ngama tick.



UZOTHOLA AMATICKS KUBOYA
NASEMEHLWENI ENJA YAKHO.



INJA YAKHO ANGEKE IFUNE
UKUDLA KWAYE IZOBA
NE LETHARGIC.



INJA YAKHO IZOBA
NOMCHAMO ONOMBALA
OLUHLAZA

4

Usenza kanjani isiqinisekiso sokuthiinja yakho ihlala ingenazo I zintshulube?



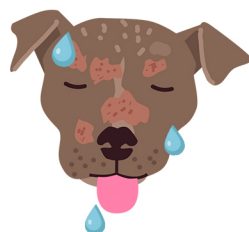
BOPHA ISIHLALA ESISHA EMSILENI WENJA YAKHO UKUXOSHA IZINTSHULUBE.

SUSA IZIKELEMU ENJENI YAKHO NGEZINKATHI ZONKE NGAMAPHILISI ATHOLAKALA EKLINIKHI YEZILWANE

HLANZA INDAWO EHLALA INJA YAKHO MIHLA YONKE.

5

Kokelezela isizathu esiqondile esenza ukuthi i mange yenze izinja zilahlekelwe izinwele. Bese uyixhuma ekwelashweni okufanele.



I 'MANGE' YIPARASITE ENCANE EHLALA NEPHILA NGOKUDLA ESIKHUMBENI.

I 'MANGE' KUMA INJA IZINWAYA UBOYA BAYO UKUZIPHOLISA.

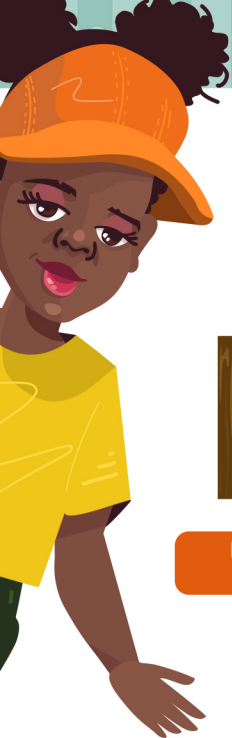
I 'MANGE' KUMA UBOYA BENJA BUWA PHANTSI NGENXA YAMA ALLERGIES.

HLANZA INDLU YENJA YAKHO KAHLE.

THOLA IMITHI EKUYIYO, AMACONTSI NOMA ISHAMPOO KWIKLINIKHI YEZILWANE.

GCOBA IOIL YEMOTO UKUPHOLISA ISIKHUMBA.





6

Khetha indlela ebalulekile yokuvikelainja yakho kwimikhuhlane.



BOPHELELA INJA YAKHO EKHAYA.



GEZA INJA YAKHO NGENTSIPHO MIHLA YONKE.



YENZA ISIQINISEKISO SOKUTHI UHLALA USESIKHATHINI NEMIGOMO.

7

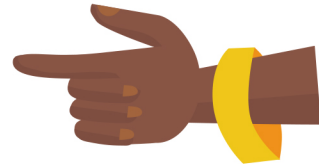
Uyilandelega kanjani indaba yokuthiinja yakho ihlala isesikhathini nemigomo yayo?



YENZA ISIQINISEKISO SOKUTHI IKHADI LENJA YAKHO LIHLALA



YIPHAWULE KWIKHALENDAYAKHO UKUZE UNGAYIKHOHLWA.



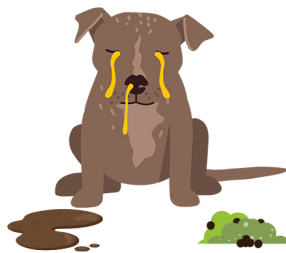
YENZA KOKUBILI.

8

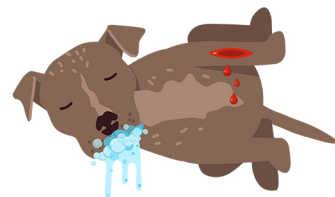
Xhomanisa izimpawu ekuyizo kule mikhuhlane elandelayo.



**ILETHARGIC
UKUPHELELWA NGUMDLA WOKUDLA
IGAZI KWILINDLE
UKUHLANZA**

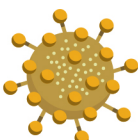


**UKUKHOHLELA
UXHUZULO
IMIFINYA
UKUHLANZA
URHUDO**

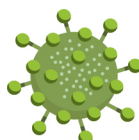


**UKUKHUBAZEKA
UKUVUZA IZINKCWE
ISILONDA**

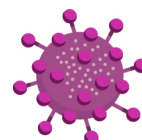
iDISTEMPER



iPARVOVIRUS



iRABIES



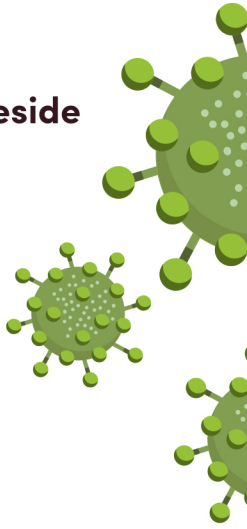
9

Umainja yakho iseyithole iParvovirus, lo mkhuhlane uhlala isikhathi eside kangakanani noma kumele ijaridi yakho ihlale ingenanja isikhathi esingakanani?

Izinyanga ezimbili

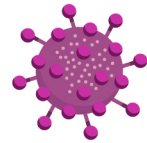
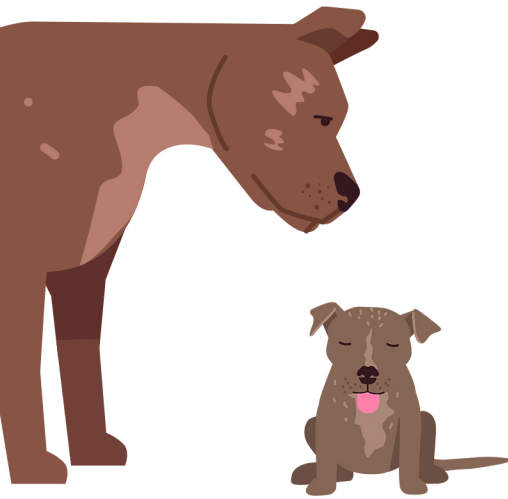
Izintsuku ezintathu

Izinyanga eziyisithupha



10

Yiqiniso noma ngamanga?



KUVIKELEKILE UKUTHI EZINYE ZIVAKASHELE INJA YAKHO NGESIKHATHI ISAPHETHWE NGUMKHUHLANE.

UMA INJA YAKHO IGULA SHESHISA UTSHELE UMUNTU OMDALA ONENKATHALO.

IIRABIES ZIYINGOZI EBANTWINI NASEZINJENI.

YIQINISO

NGAMANGA

YIQINISO

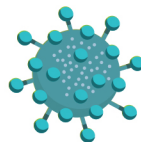
NGAMANGA

YIQINISO

NGAMANGA

11

Hlanganisa iTVT (Transmissible Venereal Tumour) nengcaciso ekuyiyona.



iTVT

YINTLOBO ETHIZE YOMKHUHLANE.

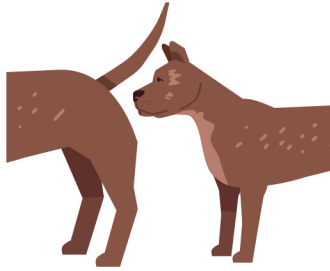
IWUHLLOBO LOMDLAVUZA.

YINTLOBO ETHIZE YOMKHUHLANE.



12

iTVT isulela kanjani ezinjeni?



iTVT ISULELA UMA INJA
INUKISA ENYE EZIMPUNDU.



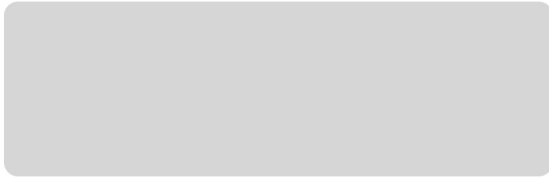
iTVT IZIFIHLA KUNTSHANI OLUDE OLUSE IBE
SEYIXHUMELA IZINJA EZIDLULA NGENDLELA.



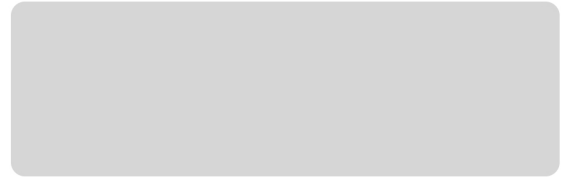
IZINJA ZIFUMANA iTVT
NGOKULALANA.

13

Cacisa ukuthi iTVT ingavikekwa ize ilaphwe kanjani.



UKUVIKELA



UKWELAPHA

14

Yiqiniso noma ngamanga?



VIKELA INJA YAKHO KWEZINYE NGESIKHATHI
ITHOLA UKWELATSHWA.

YIQINISO

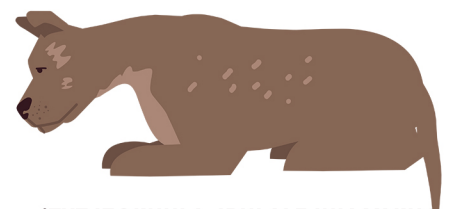
NGAMANGA



KUNESIDINGO SOKUTHI
KUALWE INZALA YEZINJA
EZINGAMANTOMBAZANE KUPHELA.

YIQINISO

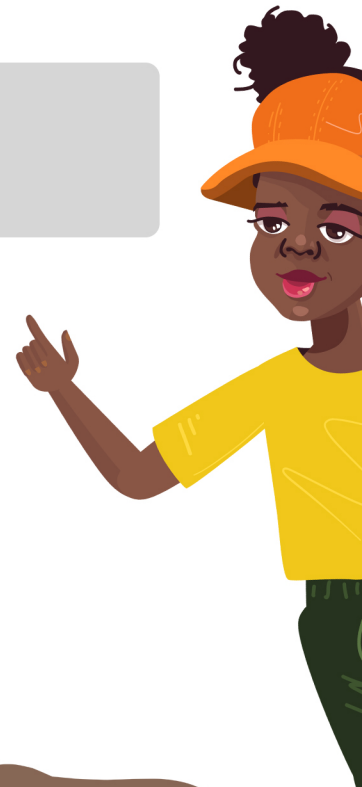
NGAMANGA



iTVT IZOKHULA IBULALE INJA YAKHO
UMA INGATHOLI UKWELAPHEKA.

YIQINISO

NGAMANGA



15

Chaza izinto ekumele uzenze umainja yakho igula, kodwa ungakhoni ukuyisa kwiklinikhi yezilwane ngokushesha.

a

b

c



16

Yiqiniso noma ngamanga?



INOCULATIONS NOKUVALA INZALA KUZOVIKELA INJA YAKHO KWIMIKHUHLANE.

YIQINISO

NGAMANGA

WENZE KAHLE!
Uphendule ezingaki kahle?



Umsebenzi we SIDEWALK SPECIALS
nokubonga kwi WILD AT HEART no France-Hayhurst Foundation
Ukuze uthole ulwazi olungcono vakashela u: www.sidewalkspecials.org/education