

BOSETLHOGO GA GO EA LOKA

E rulaganyeditswe go dirisiwa gammogo le dividio tse di rutang tse di kgonang go laisololwa tse di mo webosaeteng ya www.sidewalkspecials.org/education.

1

Tshekeletsa dilo tse pedi tse o tshwanetseng go di dira fa o bona ntša e e bofilweng ka ketane.



E RWESE HUTSE YA PHATHI
FA E LE MO LETSATSING.



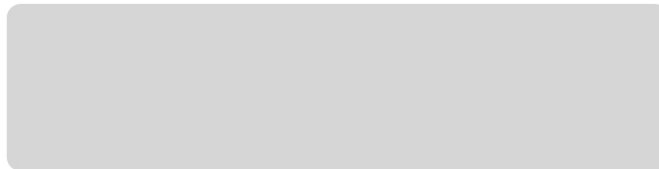
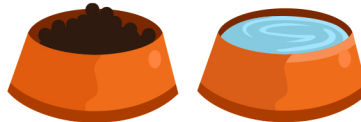
BOLELELA MOGOLO YO O NANG
LE BOIKARABELO KA GONNE
DIPHOLOGOLO DI NA LE DITSHWANELO.



TLHOMAMISA GORE E NA
LE METSI KA YONE NAKO EO.

2

Tlhalosa kgololesego ya ntlha e e bontshiwang fa tlase.



3

O tshwanetse go fa ntša ya gago dijo ga kae?



GABEDI MO LETSATSING

E TLA IPATLELA DIJO

BEKE LE BEKE

TSATSI LE LETSATSI

4

Ntša ya gago e tlhoka metsi a a phepa ga kae?



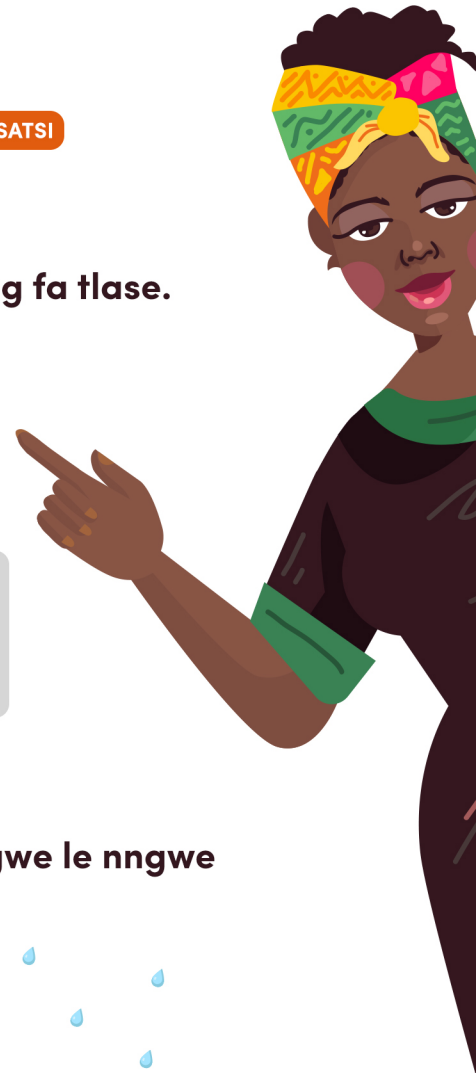
E TLA IPATLELA METSI

BEKE LE BEKE

TSATSI LE LETSATSI

5

Tlhalosa kgololesego ya bobedi e e bontshiwang fa tlase.



6

Tshekeletsa dilo tse tharo tse ntlwana ya ntša nngwe le nngwe e tshwanetseng go nna le tsone.



PLAYSTATION



KAGONYANA



TSHIRELETSEGO



BOTHITHO



KETANE E E KHUTSHWANE



7

Tlhalosa kgololesego ya boraro e e bontshiwang fa tlase.



8

Boammaaruri kgotsa Maaka?



NTŠA YA GAGO E TLHOKA MOLEMO
WA KWA TLILINIKING YA DIPHOLOGOLO
GORE E SE KA YA LWALA.

BOAMMAARURI

MAAKA



O SE KA WA TSHWENYEGA KA
NTŠA YA GAGO FA E GOBETSE,
GANTSI E TLA FOLA KA BOYONE.

BOAMMAARURI

MAAKA



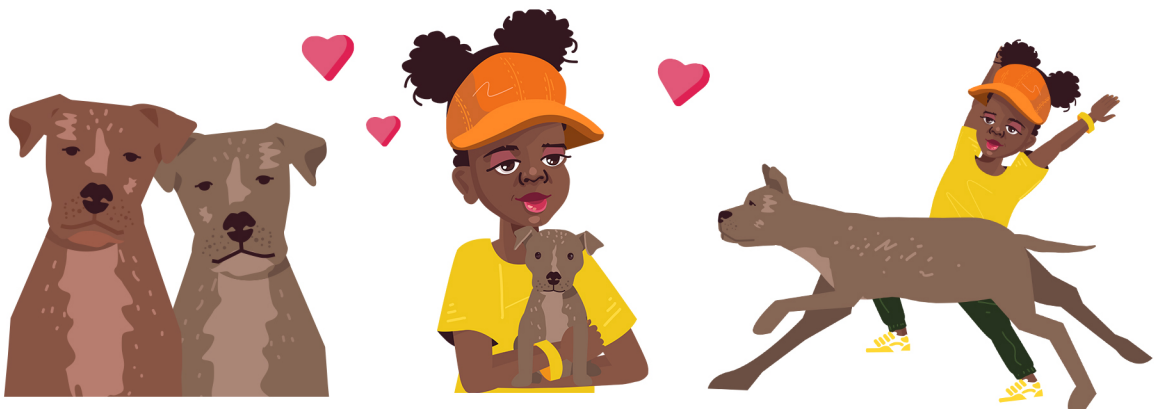
FA NTŠA YA GAGO E LWALA, O
TSHWANETSE GO E ISA KWA TLILINIKING
A DIPHOLOGOLO NTLE LE GO DIA NAKO.

BOAMMAARURI

MAAKA

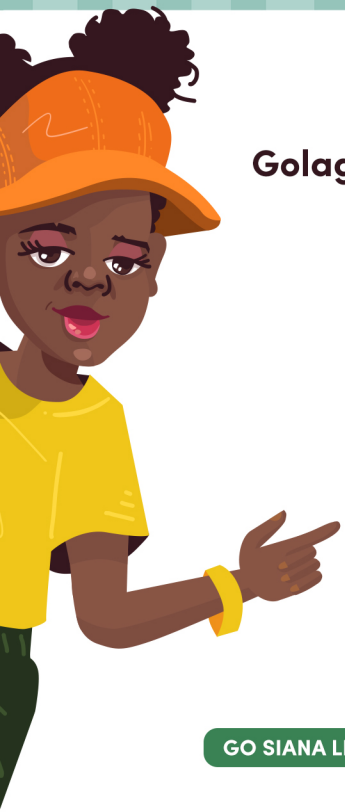
9

Tlhalosa kgololesego ya boné e e bontshiwang fa tlase.



10

Golaganya ntša e e golegilweng le dilo tsotlhe tse e sa kgoneng go di dira le tse e di tlhokang gore e itumele.



GO SIANA LE GO TSHAMEKA

GO LWA

GO NNA KAROLO YA LELAPA

GO NNA LE DITSALA

11

Tshekeletsa se o tshwanetseng go se dira fa o sa kgone go golola ntša ya gago.



E RWESE DIHUTSE DI LE PEDI TSA PHATHI FA E LE MO LETSATSING.



E DIRELE MO E KA KGONANG GO SIANA TENG GORE E KGONE GO SIANA SIANA MO PATLELONG.



PENTA KETANE MMALA O PINKI GORE E NNE KETANE YA BOITUMELO.

12

Tlhalosa kgololesego ya botlhano e e bontshiwang fa tlase.



13

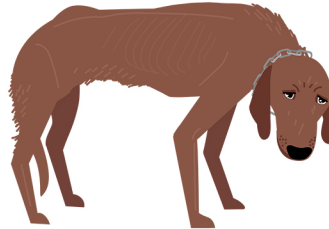
Boammaaruri kgotsa Maaka?



YOUR DOG NEEDS YOU TO KEEP THEM SAFE FROM HARM.

BOAMMAARURI

MAAKA



SCARING A DOG CAN NEGATIVELY CHANGE ITS PERSONALITY.

BOAMMAARURI

MAAKA



IT IS ILLEGAL TO HURT AN ANIMAL AND YOU COULD GET IN TROUBLE WITH THE POLICE.

BOAMMAARURI

MAAKA

14

Boammaaruri kgotsa Maaka?



FA O SIRELE TSA NTŠA YA GAGO LE YONE E TLA GO SIRELE TSA MME YA NNA TSALA YA GAGO E KGOLO.

BOAMMAARURI

MAAKA



O DIRILE SENTLE!

O arabile di le kae sentle?



Porojeke ya SIDEWALK SPECIALS

e go lebogiwang WILD AT HEART le France-Hayhurst Foundation ka tsela e e kgethegileng.

Go bona didiriswa tse dingwe tsa thuto tsena mo webosaeteng ya www.sidewalkspecials.org/education